



JANNY MT



Flexible Installations of Controlled Atmosphere Units

“Janny MT preservation”

Captacal

Captacal

- Optimise preservation for CO₂ sensible products

Recommendations of use

- Open the Captacal bag above fruit or at the bottom of the module
- Remember to open the Captacal plastic bag and use it as a base between the products and cotton bag

Key recommendations

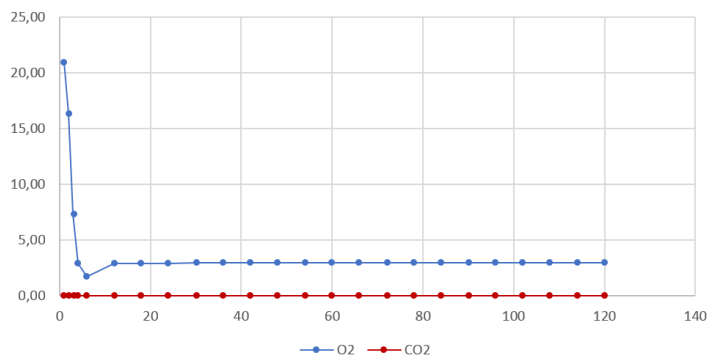
The Captacal role is to keep CO₂ rate between 0 and 1 % in the module in order not to deteriorate the product



Product	Sensible varieties
Apple	Boskoop, Braeburn, Cox, Fuji, Honeycrisp, Honeycrunch, Mairac, RubINETTE, Pink Lady, Granny Smith
Pear	Abbate Fétel, Angelys, Beurre Bosc, Conférence, Packam's Triumph
Chinese leave	Pé-Tsaï

Ideal curve

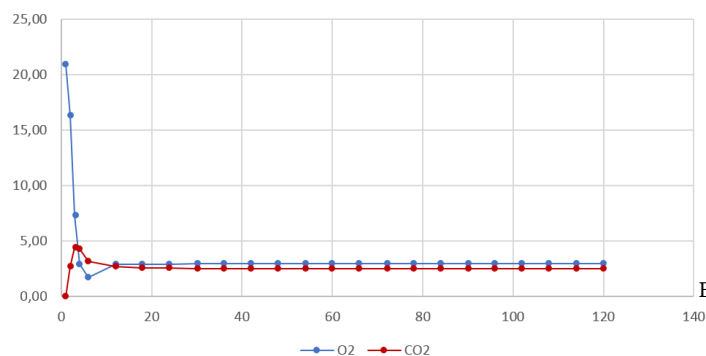
Gas content monitoring with Captacal



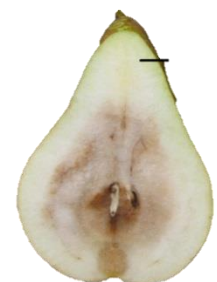
With Captacal



Gas content monitoring without Captacal



Without Captacal



Browning due to an excess of CO₂

Sté JANNY MT SAS
 La Condemine 71260 Péronne France
 Tél : 0033.3.85.23.96.20
 Fax : 0033.3.85.36.96.58 / 0033.3.85.23.96.29
 Mail : jannymt@jannymt.com
 Web : www.jannymt.com